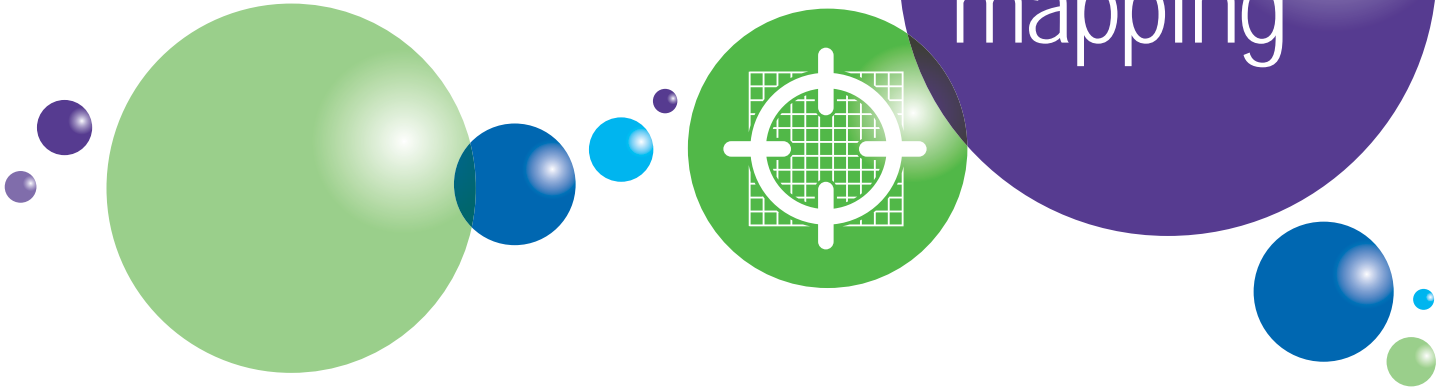


business stream

A SCOTTISH WATER COMPANY



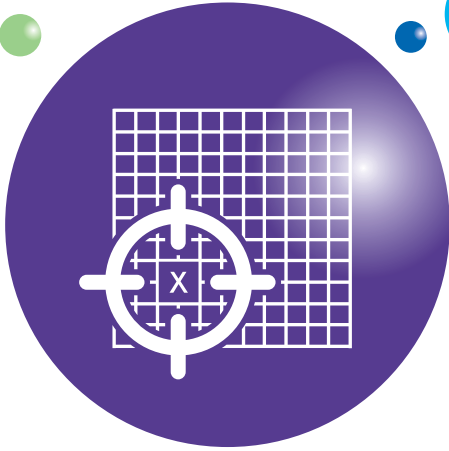
network
mapping



What's under your site?

You wouldn't set off on a driving holiday without checking out the route. Or travel on the Tube without knowing where the line went. Yet many businesses operate day in, day out without a clear map of their water network.

At Business Stream, we help organisations plot their underground water services precisely. This gives you the assurance that when a problem crops up, you have the knowledge and information to respond – and to keep disruption to an absolute minimum.



‘It could make the difference between having to shut down the water supply for an entire site – or just making a speedy repair in the section affected.’

Putting you back on the map

To help you chart your network, we'll start by gathering existing information about the infrastructure. Then we carry out a site survey, using pipe locators to assemble a complete picture. The end product can be as basic or as sophisticated as you need.

When networks get lost...

It's not surprising that many companies don't know what their water network looks like.

Assets change, sites are redeveloped, and the people who know the infrastructure move on – without that knowledge being captured for the organisation. Often, that only becomes an issue when there's an emergency.

In the case of a burst, for instance, it's invaluable to be able to pinpoint precisely where the pipe runs, what it's made of, and how to isolate the water main.

It could make the difference between having to shut down the water supply for an entire site – or just making a speedy repair in the section affected.

Our standard network plan comes in OS map scale and quality. We can show roads, drainage or any other infrastructure that's important to you – including your gas and electricity networks. Most businesses prefer an electronic version that can be safely stored and shared with all the relevant people.

For the most detailed results, we are also able to combine our survey findings with aerial photography. This can then be combined with asset data to create an interactive map where you can drill down on the detail. Clever stuff.

And it makes sense for us to carry out a condition check at the same time as the survey – so we can make recommendations about any assets we find in a poor state.

Get in touch today to discuss how we can put you back in the picture.

0845 602 8855

solutions@business-stream.co.uk

www.business-stream.co.uk

